



Leak Sealing & Waterproofing • Concrete Repairs • Crack Injection • Pressure Pointing & Grouting • Structure Condition Surveys • Protective Coatings • Joint Sealing  
Diamond Drilling & Sawing • Concrete Bursting & Crunching • Robotic Demolition

**Scheme:** White Horse Culvert, Saffron Walden

**Problem:** Settlement of brick arch, accumulation of debris and washout of brick invert

**Solution:** Reconstruction of invert and strengthening/pointing of arch from within culvert

**Client:** Environment Agency      **Main Contractor:** Lindum Construction

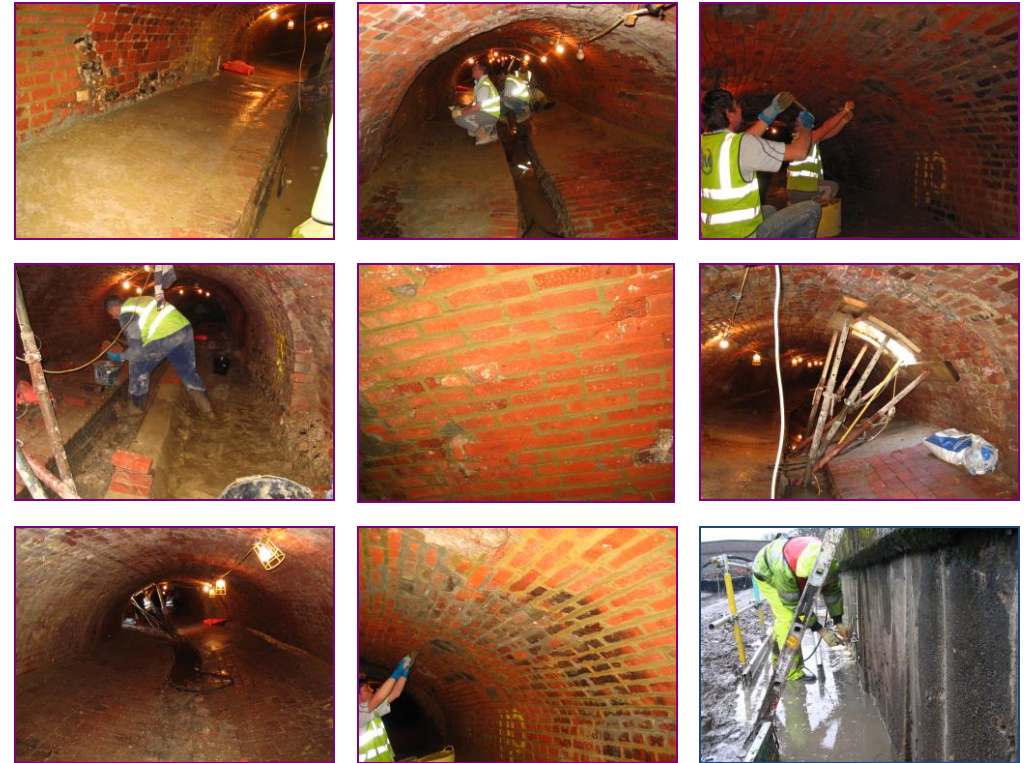
Following a series of inspections by consulting engineers Fenland Hydrotech, Ram Services Limited's confined space trained labour force mobilised to Saffron Walden to clear the debris and refurbish the most seriously affected sections of the culvert floor and roof arch.

An access opening was made by enlarging an existing manhole, and all debris cleared using a small excavator operating above the culvert. The missing sections of brick lined invert were then reconstructed by reforming the central channel using brick salvaged on site, and casting a new invert apron slab to each side in concrete.

The worst section of the roof was dismantled, again working from above, and then reconstructed to the original profile using more of the original brickwork, with a concrete saddle cast over the top.

Further work then ensued to make good voids around drainage connections and renew areas of degraded pointing in the brick arch.

The experienced team was able to complete the work to a high standard within the allotted time of three weeks.



For further details please contact our Structural Refurbishment Team.

**Contract duration:** Three weeks

**Contract value:** £20,200.00